
10/100M Single Fiber WDM Media Converter

MC101-3SXXB10/MC101-5SXXB10

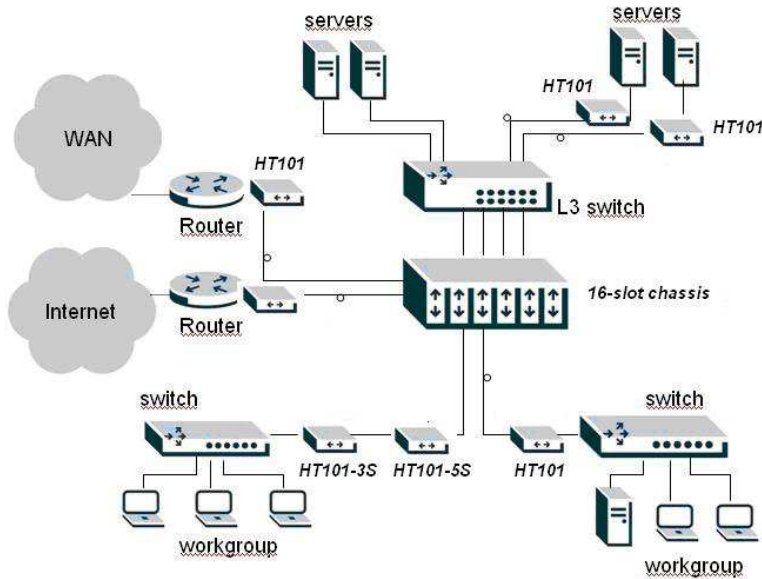


MC101-3SXXB10/MC101-5SXXB10 series 10/100Base-TX/FX Bridge Media Converter complies with IEEE802.3 and IEEE802.3u Standards. MC101-3SXXB10/MC101-5SXXB10 series enable network managers to connect 10 Mbps and 100 Mbps twisted pair network segments and active equipment to fiber optic cabling more cost-effectively than ever. WDM Technology Combines Dual Fiber Cables into Single Fiber, greatly save the Installation cost of Expensive Fiber Cable. Both a media and data rate converter, MC101-3SXXB10/MC101-5SXXB10 series features 10/100 auto-negotiation on the twisted pair port while the fiber port operates at 100Mbps. MC101-3SXXB10/MC101-5SXXB10 series converters are ideal for any premises FTTH, LAN-to-LAN or LAN-to-WAN fiber networking applications.

Key Features

- Complies with IEEE802.3 and IEEE802.3u 10/100Base-TX and 100Base-FX
- 10/100Mbps and full/half duplex automatically configure in TP port
- MDI/MDI-X Auto Negotiation
- WDM Technology Combines Dual Fiber Cables into Single Fiber .Greatly save the Installation cost of Expensive Fiber Cable
- Extend fiber distance up to 80KM for single-mode fiber
- Color coded LEDs inform about the status of converter and can be used for network diagnostics

Application



Specification

Standards	Support the IEEE802.3, IEEE802.3u
Transmission Mode	Support auto-negotiation, full-duplex, and half-duplex devices.
Interface	10/100Mbps RJ-45 port x 1
	100Mbps FX port x 1
Transmission distance	20km(single mode, 1310nm/1550nm)
	40km(single mode, 1310nm/1550nm)
	60km(single mode, 1310nm/1550nm)
	80km(single mode, 1310nm/1550nm)
Wavelength	1310nm, 1550nm, Tx1310nm/Rx1550nm, Tx1550nm/Rx1310nm
Fiber Connector type	SC
Fiber type	Single mode
LEDS	PWR,FEF,SPD,FXLINK/ACT,TX LINK/ACT,FDX
DIP Switch Function	LFP,SPEED, DUPLEX
Operating temperature	0~+50℃
Storage temperature	-20℃~ 60℃
Humidity	5% to 90% non condensing
Power supply	Input AC 85~265VAC, or -48VDC, output DC 5V 1A
Power Consumption	5W(Typ.)
Emission/Safety	FCC Class A, CE, ROHS



Dimensions	97mm* 70mm* 26mm (External Power Supply)
------------	--

Typical Optical Power Budget

TYPE	MC101-3S20B	MC101-5S50B	MC101-3S40B	MC101-5S40B	MC101-3S60B	MC101-5S60B	MC101-3S80B	MC101-5S80B
Connector Type	SC	SC	SC	SC	SC	SC	SC	SC
TX Wavelength	1310nm	1550nm	1310nm	1550nm	1310nm	1550(DFB)nm	1310nm	1550(DFB)nm
RX Wavelength	1550nm	1310nm	1550nm	1310nm	1550nm	1310nm	1550nm	1310nm
Typical Distance	20 Km	20 Km	40 Km	40 Km	60 Km	60 Km	80 Km	80 Km
FHC TX PWR	-14.0dBm	-14.0dBm	-8.0dBm	-8.0dBm	-3.0dBm	-5.0dBm	0dBm	0dBm
Max TX PWR	-8.0dBm	-8.0dBm	-3.0dBm	-3.0dBm	0dBm	0dBm	+2dBm	+2dBm
Sensitivity	-33.0dBm	-33.0dBm	-33.0dBm	-33.0dBm	-36.0dBm	-36.0dBm	-38.0dBm	-36.0dBm
Link Budget	19.0 dB	19.0 dB	25.0 dB	25.0 dB	33.0 dB	31.0 dB	38.0 dB	36.0 dB