

## SFP Variable Optical Attenuator

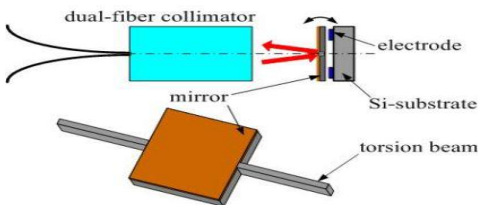
### Features

- ◆SFP shell
- ◆I2C Interface
- ◆Hot Pluggable
- ◆Compliance with RoHS

### Application

- ◆Optical Power Equalization
- ◆Optical Sensor
- ◆Testing

### Package



### Specification

Parameter	Unit	Specification	Note
Wavelength Range	nm	1530-1565	C band
		1570-1610	L band
Attenuation Type		Bright or Dark	
Attenuation Range	dB	≥30	
Blocking State Attenuation	dB	≥40	Dark type
Insertion Loss	dB	≤ 1.5	without tap monitor
		≤ 2.5	with tap monitor
Attenuation Resolution		Continuous	
Wavelength Dependent Loss	dB	≤0.3	@0dB Att.
		≤1.5	@20dB Att.
Polarization Dependent Loss	dB	≤0.1	@0dB Att.
		≤0.3	@20dB Att.
Temperature Dependent Loss	dB	≤0.7	@0dBAtt. compare with RT
		≤1.0	@<20dB Att.compare with RT
Return Loss	dB	≥45	
PMD	ps	≤0.1	
Response Time	ms	≤3	
Optical Power Handling	mW	300	
Driving Voltage	VDC	6V or 15V	
Power consumption	mW	≤ 2	
Operating Temperature	°C	-5 to 65	
Storage Temperature Range	°C	-40 to 85	
Package Dimension	mm	SFP	

## Ordering Information

GL-SFPV	Wavelength	Type	Voltage	Tap PD
GB-Link SFP VOA	C=C Band	B=Bright	5V	00=No Monitor
	L=L Band CL=C+L Band	D=Dark	15V	IPD=Input port with monitor  OPD=Output port with monitor

F/2,D Building, Fuxin Industrial Area, 3rd Yangxia Street, Shajin Town, Shenzhen, China

Tel:86-755-27683696

Fax:86-755-36652839

[Http://www.GB-Link.com](http://www.GB-Link.com)